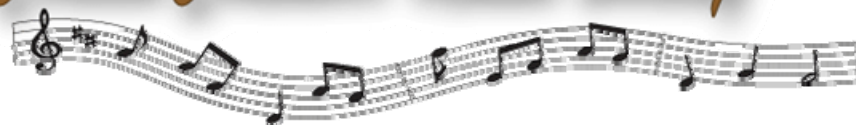


St. Cecilia Chamber Music Society



St. Cecilia Chamber Music Society

presents

"Romantic Composers of the 21st Century"

Tuesday, November 10, 2009 at 7:30 p.m.

St. Stephen's Episcopal Church

1805 W. Alabama at Woodhead

This lyrical concert will feature song settings by four living composers: Richard Faith, Roger Keele, Robert Nelson, and Maurice Rissman, all of whom will be present at the concert. Musicians will include St. Cecilia favorites Roger Keele, piano; Hector Vásquez, baritone; Barrett Sills, cello; and soon-to-be favorites Frances Fenton, soprano; and Todd Miller, tenor.

Compositions will interpret poems by Thomas Hardy, Edgar Allan Poe, John Masefield, Gerard Manley Hopkins, Roger Keele, William Oldys, Lynda Lacy, and Renaissance works revisited, grouped as "Dream Songs," "Songs of the Sea," "Songs of the Season," and "Songs of Love." Also featured will be Keele's "Fantasy for Cello and Piano" and a première of Nelson's "Reverie" for tenor, cello, and piano. Please join us for this memorable evening.

Tickets at the door, cash or check only:

\$25 general admission; \$20 for seniors; \$10 with student ID

www.stceciliahouston.org

To reserve tickets: 713.331.0359

Free parking; easy access.